

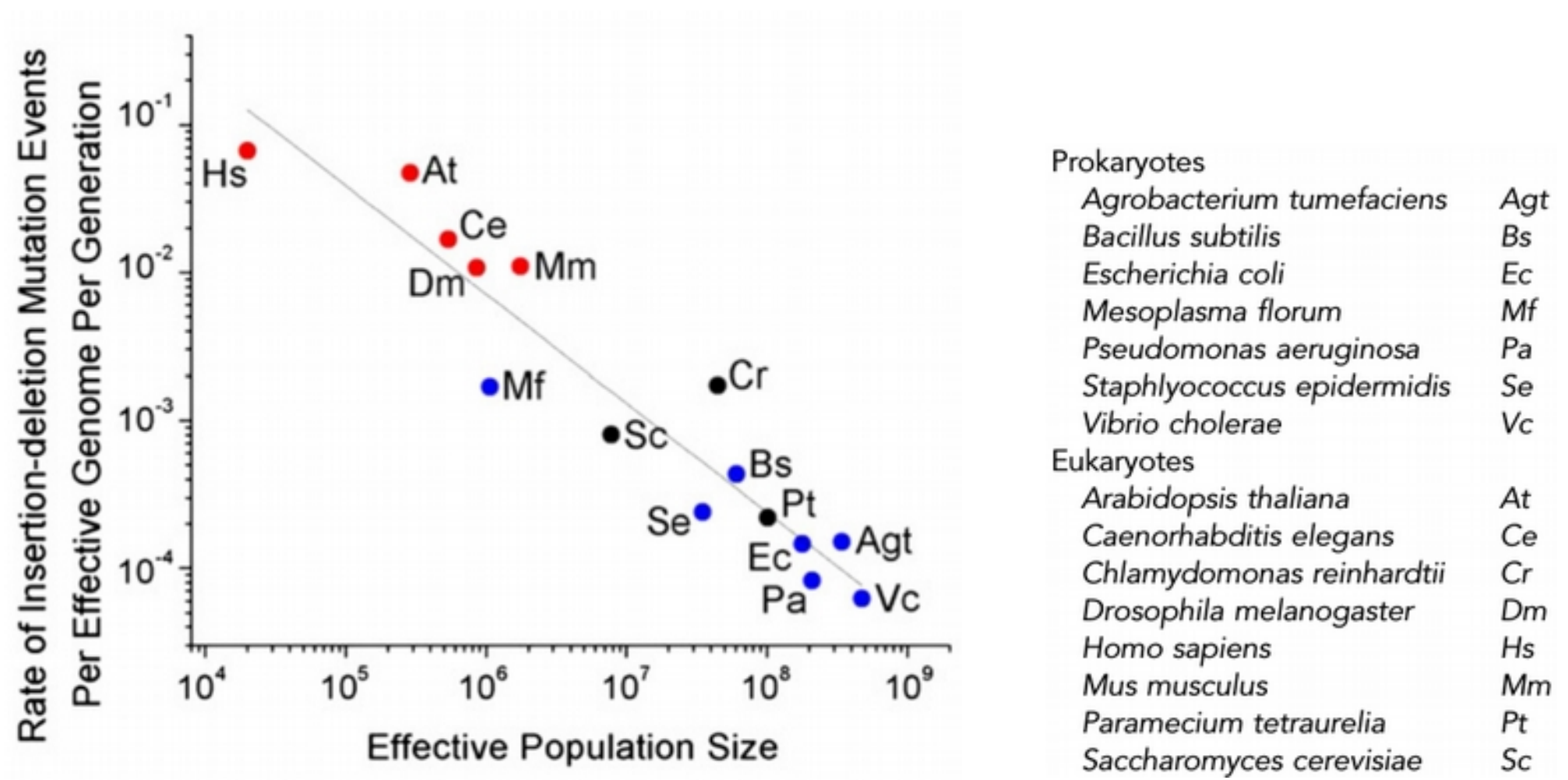
**Press report**

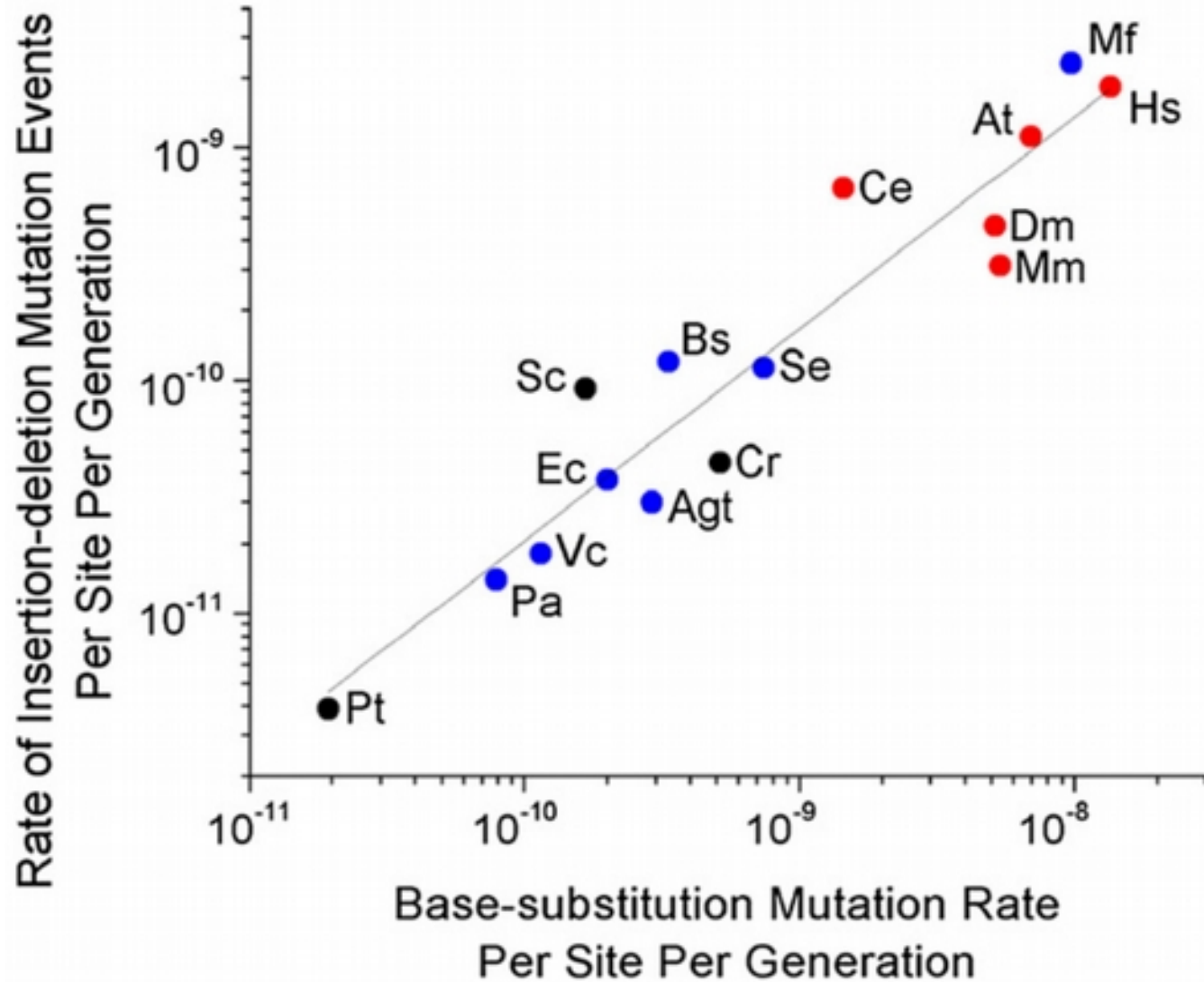
**August-Sept 2016**

**Virginie**

# Evolution of the Insertion-Deletion Mutation Rate Across the Tree of Life

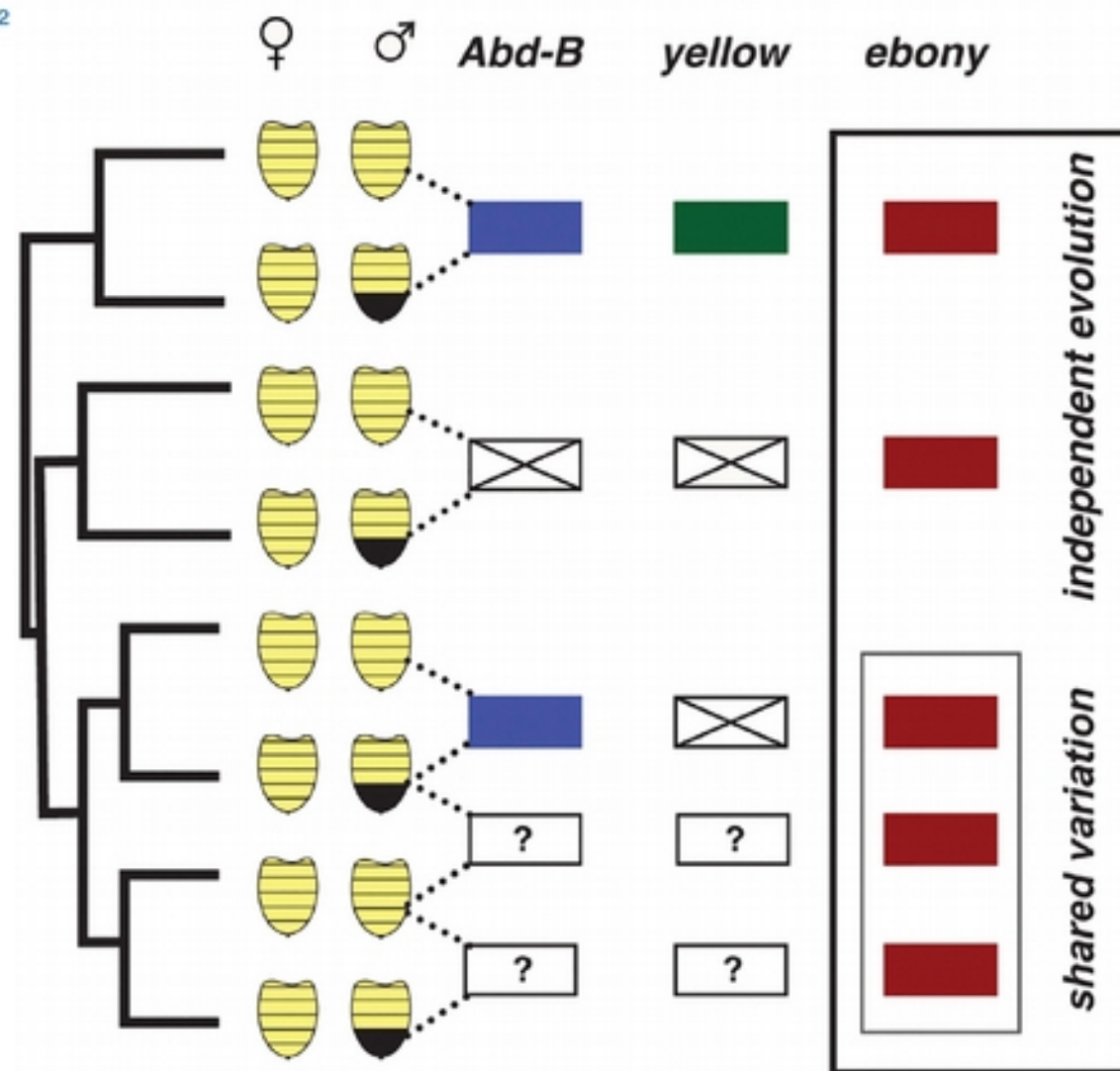
Way Sung,<sup>\*,1,2</sup> Matthew S. Ackerman,<sup>†,1</sup> Marcus M. Dillon,<sup>‡</sup> Thomas G. Platt,<sup>†,\*\*</sup> Clay Fuqua,<sup>†</sup> Vaughn S. Cooper,<sup>‡,\*\*</sup> and Michael Lynch<sup>†</sup>



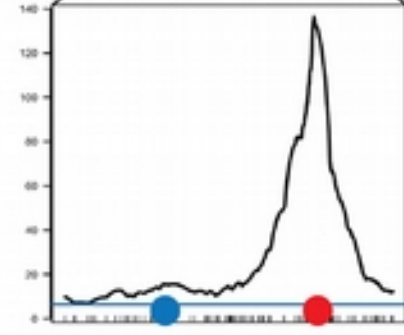
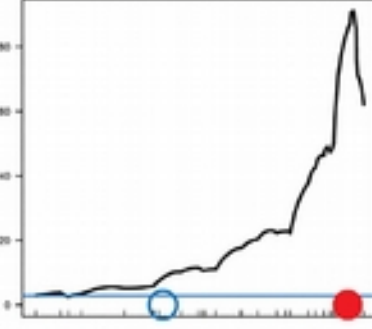
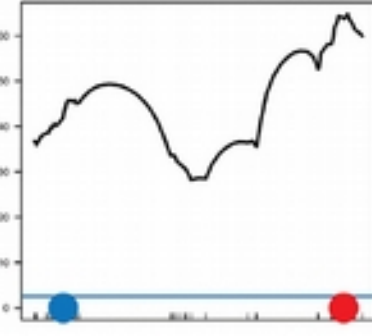
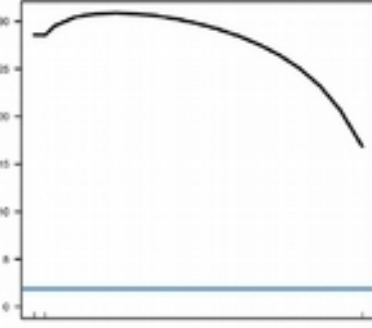
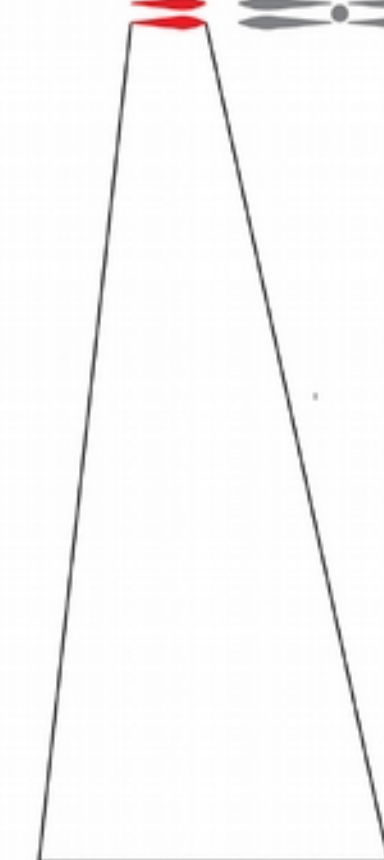
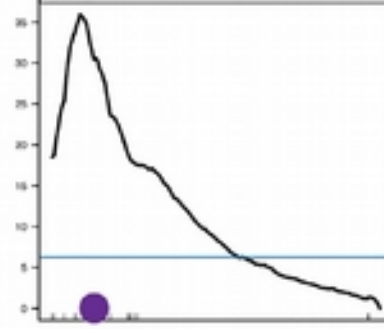
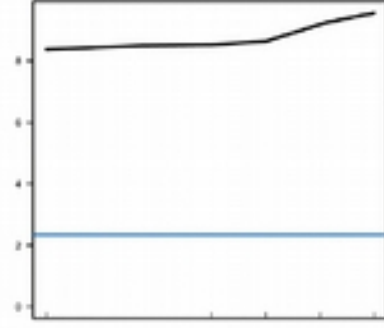


# Genetic Convergence in the Evolution of Male-Specific Color Patterns in *Drosophila*

Sarah A. Signor,<sup>1,2,4,\*</sup> Yang Liu,<sup>3</sup> Mark Rebeiz,<sup>3</sup> and Artyom Kopp<sup>2</sup>



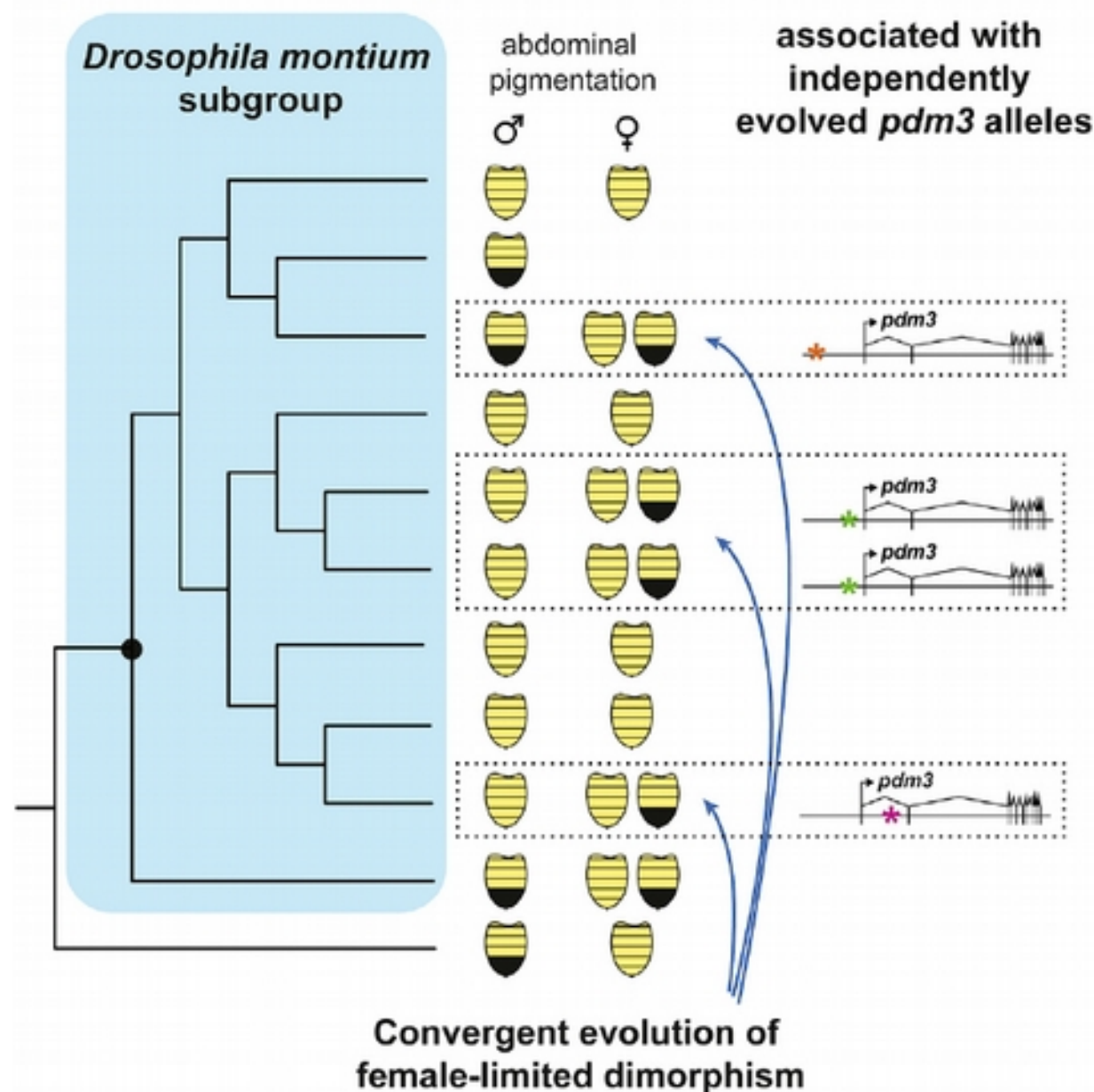
*D. m. malerkotliana/D. bipectinata*     *D. ercpeae/D. merina*     *D. p. nigrens/D. p. pseudoananassae*     *D. m. malerkotliana/D. m. pallens*



X     2L     2R     3L     3R     4

# The *pdm3* Locus Is a Hotspot for Recurrent Evolution of Female-Limited Color Dimorphism in *Drosophila*

Amir Yassin,<sup>1,6</sup> Emily K. Delaney,<sup>2,6</sup> Adam J. Reddiex,<sup>3</sup> Thaddeus D. Seher,<sup>2,4</sup> Héloïse Bastide,<sup>1</sup> Nicholas C. Appleton,<sup>3</sup> Justin B. Lack,<sup>1</sup> Jean R. David,<sup>5</sup> Stephen F. Chenoweth,<sup>3</sup> John E. Pool,<sup>1,\*</sup> and Artyom Kopp<sup>2,7,\*</sup>



# THE LOCI OF REPEATED EVOLUTION: A CATALOG OF GENETIC HOTSPOTS OF PHENOTYPIC VARIATION

Arnaud Martin<sup>1,2</sup> and Virginie Orgogozo<sup>3</sup>

2013

## What's new ?

“The genetic paths to sexual dimorphism may be constrained within a clade  
but variable across clades.”



## RESEARCH ARTICLE

# Phenotypic Plasticity through Transcriptional Regulation of the Evolutionary Hotspot Gene *tan* in *Drosophila melanogaster*

Jean-Michel Gibert<sup>†\*</sup>, Emmanuèle Mouchel-Vielh<sup>†\*</sup>, Sandra De Castro, Frédérique Peronnet

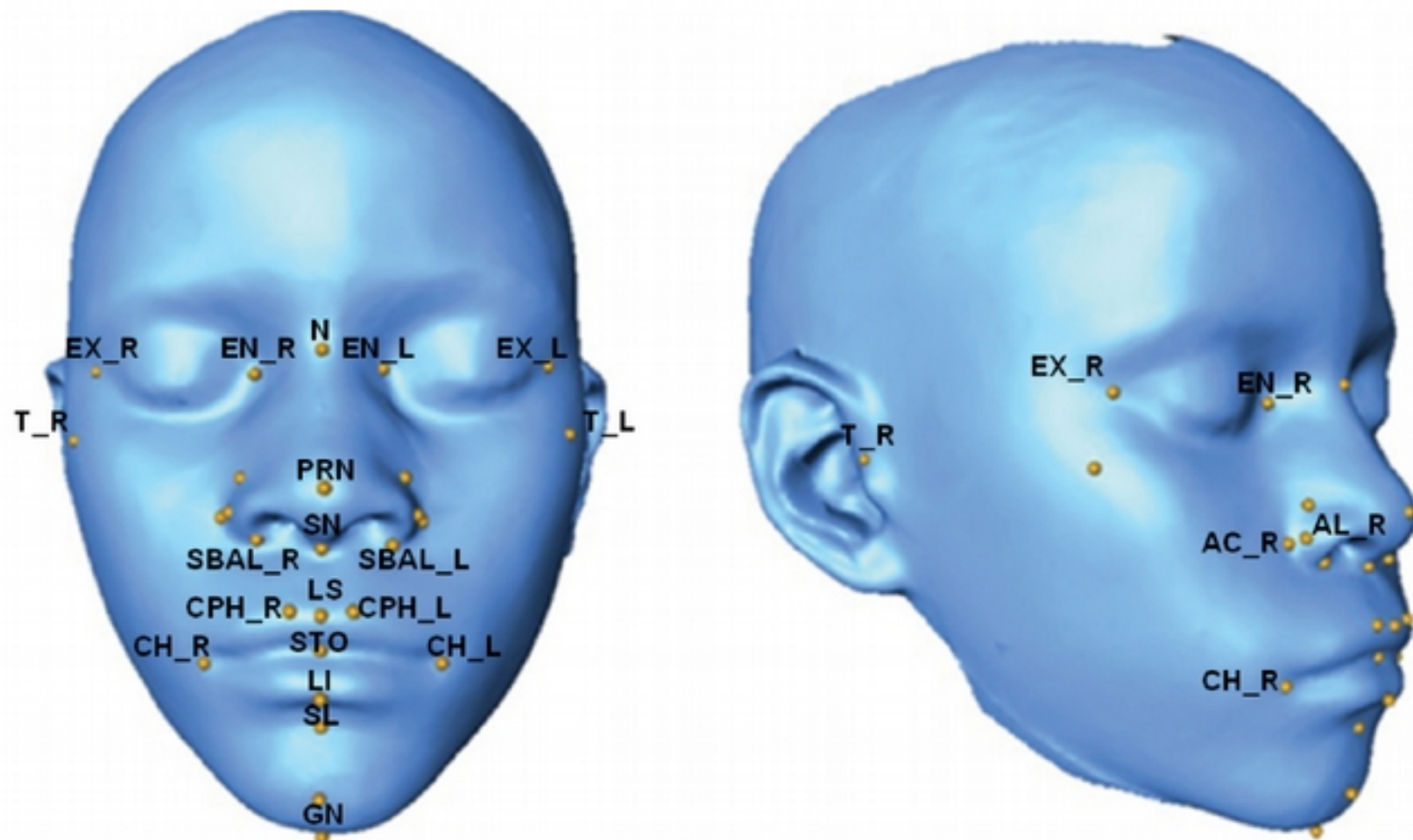
Same cis-regulatory element for:

- temperature plasticity in *D. melanogaster*
- intraspecific variation in *D. melanogaster*
- intraspecific dimorphism in *D. erecta*
- interspecific variation between *D. santomea* and *D. yakuba* (3 independent loss-of-function mutations)

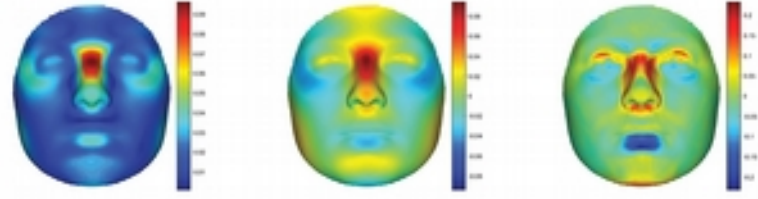
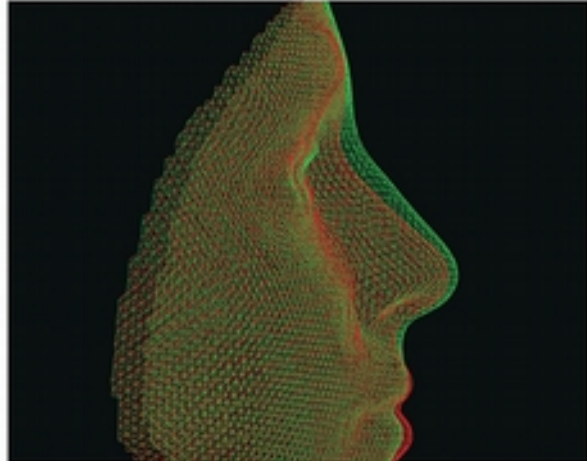


RESEARCH ARTICLE

# Genomewide Association Study of African Children Identifies Association of *SCHIP1* and *PDE8A* with Facial Size and Shape



rs974448



rs7559271

