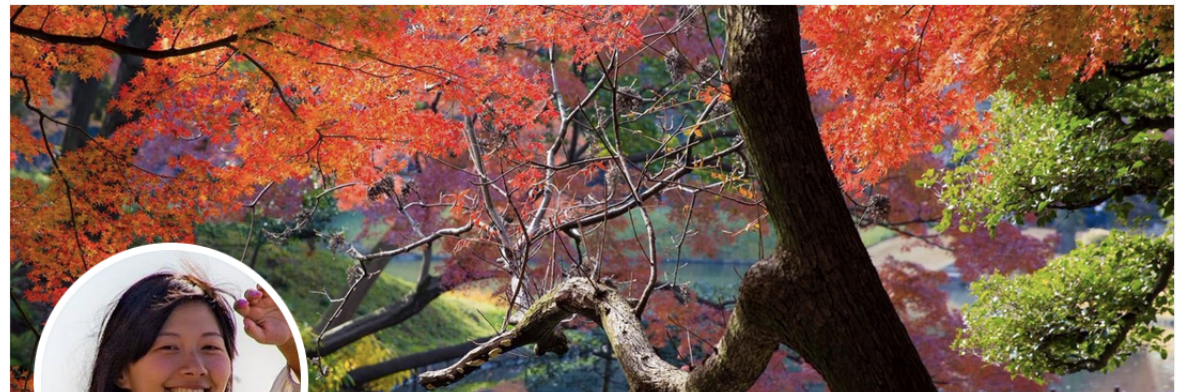


16 Nov 2021

THE SEARCH FOR THE
ORIGIN OF COVID-19



ALINA CHAN
MATT RIDLEY



Alina Chan

@Ayjchan Follows you

Postdoctoral researcher at the Broad Institute of MIT and Harvard 🇨🇦🧬 Co-author
of VIRAL: the search for the origin of Covid-19 📖🧑🔬🐼🦋🦋🦋🦋🦋

📍 Cambridge, MA 📅 Joined December 2011

537 Following 46.2K Followers



Hume Field
@HumeField

25 November 2021

I see the WHO SAGO is formally announced. Lets hope their science isn't pressured by politics, given the way the earlier WHO mission/report was dissed. And where is [@MarionKoopmans](#) who was previously flagged as a member?!!



who.int

About Scientific Advisory Group on the Origins of Novel Pat...
About Scientific Advisory Group on the Origins of Novel Pathogens

8:04 AM · Nov 25, 2021 · Twitter for Android

<https://twitter.com/HumeField/status/1463765406271762432?s=20>



Health Topics ▾

Countries ▾

[< Scientific Advisory Group for the Origins of Novel Pathogens](#)

About us

Members

[https://www.who.int/groups/scientific-advisory-group-on-the-origins-of-novel-pathogens-\(sago\)/about](https://www.who.int/groups/scientific-advisory-group-on-the-origins-of-novel-pathogens-(sago)/about)

Jamie Metzl

#247

Lex Fridman

8 December 2021



Jamie Metzl: Lab Leak Theory | Lex Fridman Podcast #247

219,839 views • Dec 8, 2021

6.5K DISLIKE SHARE SAVE ...



Lex Fridman
1.35M subscribers

SUBSCRIBE

<https://www.youtube.com/watch?v=K78jqx9fx2I>

VIEWPOINT: COVID-19

Dissecting the early COVID-19 cases in Wuhan

Elucidating the origin
of the pandemic requires
understanding of
the Wuhan outbreak

By **Michael Worobey**



Coronavirus pandemic: All stories

+ FOLLOW

China / Science

12 December 2021

Chinese scientist hits back at Wuhan market coronavirus origin paper

- Liang Wannian takes aim at suggestions of strong evidence linking the market with early community transmission
- Evolutionary biologist says reports point to a vendor at the food centre as the earliest known case



Linda Lew

+ FOLLOW

Published: 11:00pm, 11 Dec, 2021

Why you can trust SCMP

Chen “started experiencing cold-like symptoms such as headaches and dizziness on December 8, according to Liang”

<https://archive.md/ybb2a>

https://www.scmp.com/news/china/science/article/3159347/chinese-scientist-hits-back-wuhan-market-coronavirus-origin?module=perpetual_scroll_0&pgtype=article&campaign=3159347

First symptoms on December 15 according to Worobey Science paper



Michael Worobey @MichaelWorobey · Dec 12



Liang suggests in the SCMP article that the dental issues noted in the patient chart were not those of Mr Chen, but a family member. And @Drinkwater5Reed has made what is, I think, a very strong argument that the dental record was from a child... 13/

<https://twitter.com/MichaelWorobey/status/1470159020224704513?s=20>

11 Dec 2021

漢 En 

Home / Society

Taiwan confirms researcher infected with COVID in lab

Genetic sequence of Delta variant at Academia Sinica's Genomics Research Center matches infected researcher

 14006

 Tweet

 Partag

By **Keoni Everington**, Taiwan News, Staff Writer

2021/12/11 18:00

BSL-3 facility located in Taipei's Nangang District

The genomic sequence of the version of Delta contracted by the researcher differs from any other domestic cases reported in local outbreaks from June to September

<https://www.taiwannews.com.tw/en/news/4372853>